

Improving the Immunization Landscape in New Jersey



What More Can I Do?



Overview

- IMMUNIZATION RESOURCES AND EVALUATION TOOLS
- IMMUNIZATION COVERAGE RATES
- SCHOOL AND HIGHER EDUCATION IMMUNIZATION RULES
- NJDOH INITIATIVES
- LEGISLATIVE ACTIVITY UPDATE

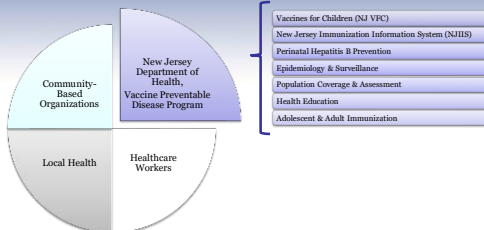


IMMUNIZATION LANDSCAPE

Resources and Evaluation Tools



Partners in Prevention



Vaccines for Children (VFC) & 317-Program

Eligibility: Those who meet at least one of the following requirements:

- American Indian or Alaska Native
- Medicaid-eligible
- Uninsured
- Underinsured

What is Uninsured?

This means that the child has health insurance, but the insurance policy either doesn't cover any vaccines or doesn't cover certain recommended vaccines.

In 2017, the NJ VFC program provided about 1.6 million doses of vaccines to providers throughout the state.



Immunization Records

The New Jersey Immunization Information System (NJiIS) is the official immunization registry for the State of New Jersey (N.J.A.C. 8:57-3)



Free, confidential, population-based online system that collects and consolidates vaccination data for New Jersey's children and adults.



Provides forecasts for next dose(s)



Updated reminder/recall function

NJiIS.NJ.GOV



Immunization Coalitions

New Jersey Immunization Coalition (NJIN)

www.immunizenj.org

Facebook: @immunizenj

Twitter: @immunizenj



Essex Metro Immunization Coalition (EMIC)

Facebook: @EssexMetroImmunizationCoalition

Twitter: @EssexMetroic

Instagram: @EssexMetroic



Essex Metro Immunization Coalition



NJ Immunization Coverage Evaluation Tools

National Immunization Survey (NIS) Data

New Jersey Behavioral Risk Factor Survey (NJ BRFS)

National Health Interview Survey (NHIS)

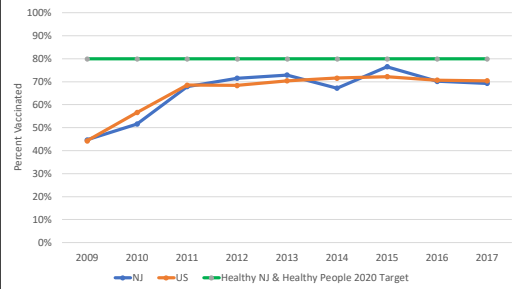
Annual Immunization Status Report (ASR)

Local Health Department (LHD) School Immunization Audits

New Jersey Immunization Information System (NJiIS)



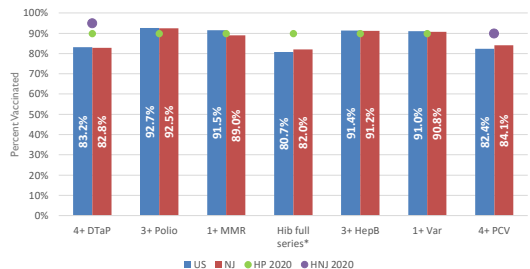
Vaccination coverage among children 19-35 months, 4:3:1:3:1:4 Series, New Jersey, 2009-2017 National Immunization Survey



Data available at ChildVaxView
www.cdc.gov/vaccines/imz-managers/coverage/childvaxview/data-reports/7-series/index.html



Estimated Vaccination Coverage Rates by Antigen, Children 19-35 Months, U.S. and New Jersey, NIS 2017

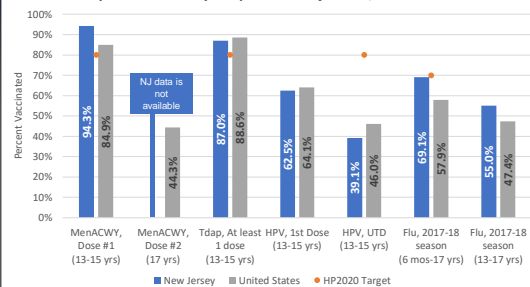


*3 or 4 doses of Haemophilus influenzae type b conjugate vaccine, depending on vaccine type

Data available at ChildVaxView
www.cdc.gov/vaccines/imz-managers/coverage/childvaxview/data-reports/7-series/index.html

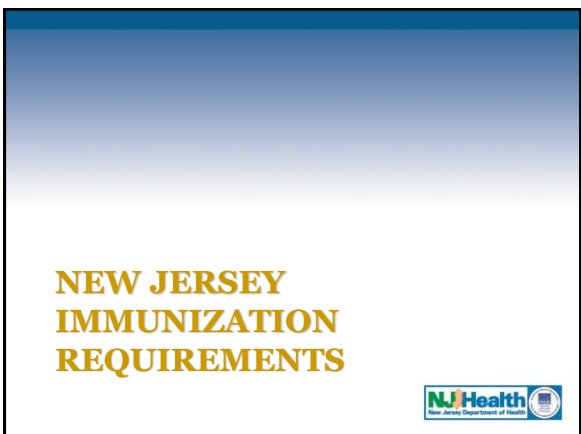


Estimated adolescent vaccination coverage by antigen as compared to Healthy People 2020 Objectives, NIS-Teen 2017





FluVaxView: www.cdc.gov/flu/vaxview/reports.html#report1718/report/index.html
TeenVaxView: www.cdc.gov/vaccines/imz-managers/coverage/teenvaxview/data-reports/index.html
MMWR: www.cdc.gov/mmwr/volumes/66/wr/mm6633a4.htm







Chronological Implementation History of Immunization Rules

Child Care and School:	Higher Education:
<ul style="list-style-type: none">Sept 1973: Implementation of Chapter 14 Statewide Rules; DTP/t/d, Polio, Measles, Rubella vaccinesSept 1979: Mumps vaccineSept 1993: Hib for child care; 2nd dose Measles-containing vaccine for Grades K or 1Sept 2001: Hep B for Grades K or 1 and 6Sept 2004: Hep B for Grades 9-12; Varicella for child care and Grade K or 1Sept 2008: PCV and Influenza vaccine for child care; Tdap and Meningococcal vaccine for Grade 6	<ul style="list-style-type: none">Sept 1990: Measles, Mumps, Rubella vaccinesSept 1993: 2nd dose Measles-containing vaccineSept 2005: Meningococcal vaccine for new students in a college dormitorySept 2008: Hep B for all new students with 12 or more credits



Religious Exemption (RE)

- Parent or guardian must provide a signed written statement requesting an exemption "on the ground that the immunization interferes with the free exercise of the pupil's religious rights"
- Religious affiliated schools can grant or deny religious exemptions from the required immunizations for pupils entering or attending their institutions
- The RE does not need to state the child's religion or specific tenants, notarized, or signed by a religious leader
- No annual update is required

Religious Exemption (2)

Parents may object to one or more vaccines

Parents can file for a RE even if a child was previously vaccinated, because their beliefs have changed

RE are null & void if vaccines are received after filing date

Rules do not stipulate that religious beliefs have to be consistently held so parents can file for a new exemption anytime



Medical Exemption (ME)

Can only be written by a medical doctor, doctor of osteopathic medicine or an advanced practice nurse licensed to practice in the United States

Must indicate a specific time period

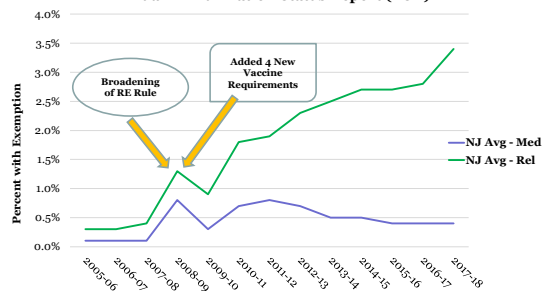
Reason(s) for medical contraindication must be enumerated by the Advisory Committee on Immunization Practices (ACIP) and the American Academy of Pediatrics (AAP)

Do not necessarily need to be renewed, but must be reviewed annually

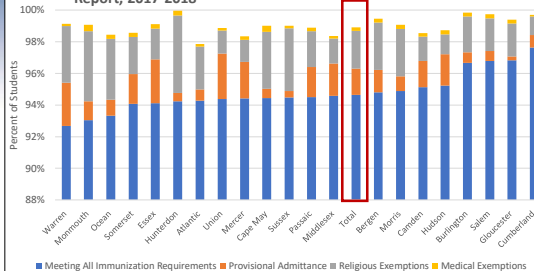
Precautions are not contraindications



Percent of Children with Exemptions in Preschool/Pre-Kindergarten, 2005-06 through 2017-18, New Jersey Annual Immunization Status Report (ASR)



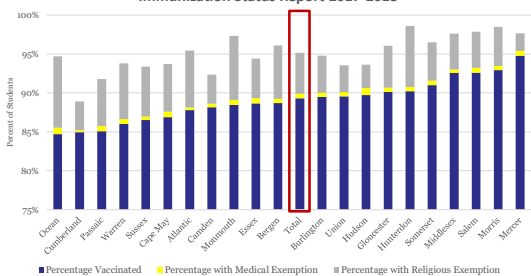
Immunization Coverage and Exemption Rates for All Reported Grades by County, New Jersey Annual Immunization Status Report, 2017-2018



Note: Percentages of children meeting all immunization requirements, with provisional admittance, with medical exemptions, and with religious exemptions in the reports do not sum to 100% due to a number of children reported in enrollment with unknown status. See Methodology section for more information.



Percentage of Children in Pre-Kindergarten Vaccinated and Exempt for Influenza by County, New Jersey, Annual Immunization Status Report 2017-2018



Out of Compliance

No immunization record

No valid RE or ME on file

Not meeting provisional definition

Exclusion from School

Receive 1 dose of all required age-appropriate vaccines.

Stay on schedule for remaining doses per the ACIP catch-up schedule.



30-Day Grace Period

Applies only to out-of-state or out-of-country transfer students

The student shall be admitted temporarily for up to 30 days if acceptable evidence of vaccination is not available

After 30 days if no documentation of previous vaccination is provided student must be excluded



REPORTING REQUIREMENTS

Annual Immunization Status Report and
Local Health Immunization Audit



Annual Immunization Status Report (ASR) and Local Health Immunization Audit

	ASR	Audit
Who conducts	Self-Report	LHD Immunization Staff
Data type	Aggregate	Antigen-Specific
Time frame	January – February 1	September 1 – June 30
Target	100% of schools	100% of schools
Grade levels	CC/Preschools, K or 1 st , Grade 6, Transfers	CC/Preschools, K or 1 st , Grade 6, Transfers
Reporting rate	93% (2017-18)	81% (2017-2018)
Data feeds to	CDC, NJSHAD, Scorecard, Maps, Tables	Scorecard, Maps, Tables



Annual Immunization Status Report (ASR)

New Jersey Immunization Network
Protecting Health for Life



ASR Reporting Timeline

Early Nov	• Packets are mailed in of the respective academic year
Jan 1- Feb 1	• Accessible at: http://www.nj.gov/health/cd/imm_requirements/annualstatusrpt.shtml
Feb 1	• Initial Due Date
Mid-Feb	• Delinquent notice to schools and LHDs; Notification of extension date
Mid-Mar	• 2 nd delinquent list shared with Health Officers for appropriate follow-up and final disposition
Mid-April	• Data cleaned and analyzed; Data submitted to CDC



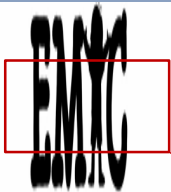
Violation to the State Sanitary Code

Each violation of any provision of the State Sanitary Code shall constitute a separate offense and shall be punishable by a penalty of not less than \$50 nor more than \$1000

N.J.S.A. 26:1A-10



Immunization Audit Report (IMM-15)



Grade Level	Not Applicable	Number of Pupils Enrolled	*Pupils Meeting All Immunization Requirements	*Pupils with Immunization Provisional Adherence	Pupils with Medical Exemptions	Pupils with Religious Exemptions	Pupils with Status Unknown
Pre-K/Children:	<input type="checkbox"/>						
Kindergarten:	<input type="checkbox"/>						
Grade 1 (First Time Enters Only):	<input type="checkbox"/>						
Grade 6:	<input type="checkbox"/>						
*Transfer Student (Out of District/State/Country only):	<input type="checkbox"/>						

Essex Metro Immunization Coalition

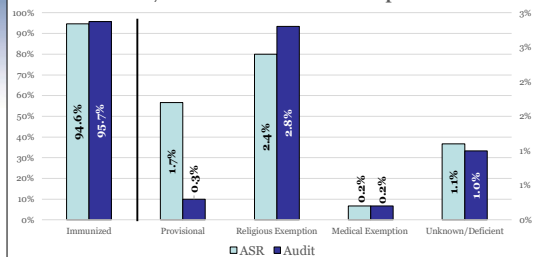


Audit Timeline

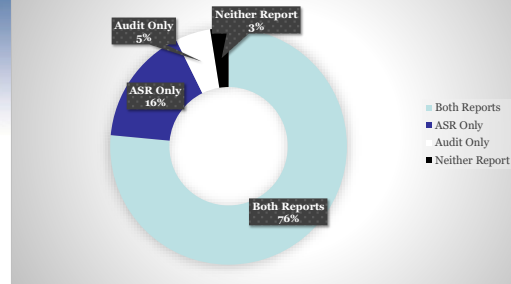
- Initial Audit (Sept 1-June 30)** • Anytime after school opens
- Re-Audit (Sept 1-June 30)** • 30 days from the original audit
- Audits entered online (By June 30)** • No later than June 30
- Audit Submission Update (May)** • List of audits received by mid-May sent to health officers
- Close of Submission Period (June 30)** • Cleaning and analysis of data



Immunization Status 2017-18 Annual Immunization Status Report 2017-18 Immunization Audit Report



Breakdown of Submitted Reports, 2017-2018



NJDOH INITIATIVES AND ACTIVITIES

How we are utilizing this data



Data-Driven Activities

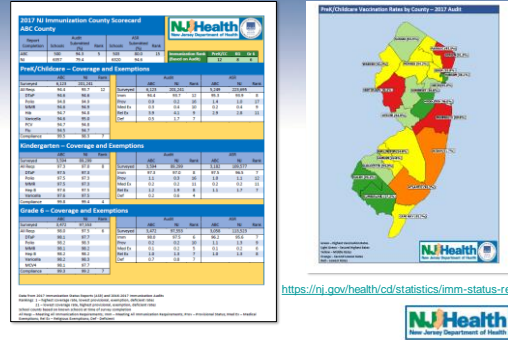
- Sharing of County and Municipality Data
- New Jersey Immunization Scorecard
- Immunization Bookmarks
- Hot Shots for Tots Immunization Campaign
- Protect Me with 3rd Adolescent Immunization Campaign
- Influenza Honor Roll
- College Influenza Flu Challenge
- HPV Coverage Assessment Tool
- AFTX/Immunization Quality Improvement Practices (IQIP)



NJ State Health Assessment Database (NJSHAD)

https://www.doh.state.nj.us/doh-shad/query/selection/immun/ImmunSelection.html

Immunization Scorecard



Immunization Bookmarks



Available in multiple languages for select counties!



Voluntary point-based incentive program

Objective

Empower child care providers to improve their capacity to develop and implement effective best practices to maintain/and or improve immunization coverage rates

Method

Motivate through recognition and incentives via a county-wide child care-based immunization campaign

PROTECT ME WITH 3+

www.protectmewith3.com



HPV Coverage Assessment Tool

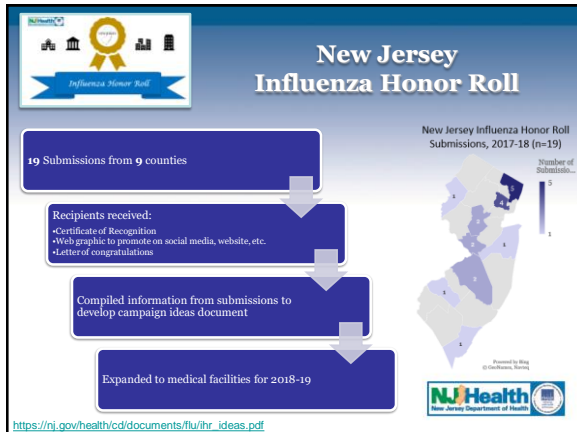
https://nj.gov/health/cd/documents/topics/hpv/hpv_vaccination_tool.pdf



This specific chart only assess the first dose of the HPV series for patients 11-12 years.

2018 AIM Bull's-Eye Award Recipient

Interactive chart to assist in tracking HPV doses administered



New Jersey College & University Flu Challenge

Modeled after Michigan's Flu Challenge

11 participating schools

Over 3,000 student responses

Overall Challenge Winners:

- Seton Hall University (2017-18)
- The College of New Jersey (2018-19)

http://nj.gov/health/cd/documents/flu/college_flu_toolkit.pdf

NJ Health
New Jersey Department of Health

AFIX Program → Future IQIP

Assessment

Feedback

Incentives

eXchange

NJ Health
New Jersey Department of Health

LEGISLATIVE ACTIVITY

NJ Health
New Jersey Department of Health

A3818

Clarifies statutory exemptions from mandatory immunizations for students

- Bill was amended to delete a statutory provision that authorizes a religious exemption from mandatory immunization requirements for students in preschools, elementary and secondary schools, and institutions of higher education, as well as language would have established additional requirements to obtain a religious exemption.

NJ Health
New Jersey Department of Health

A1991

Requires residential students at four-year institutions of higher education to receive immunization for meningitis in accordance with recommendations of Advisory Committee on Immunization Practices

NJ Health
New Jersey Department of Health

What You Can Do

Identify areas of improvement and collaborative opportunities with State, local, community partners

Encourage the use of NJIIS and promote reminder/recall function within the registry

Prioritize the annual audit process

Implement clear and consistent enforcement and monitoring

Think outside the box to implement creative campaigns to reach different target audiences

Utilize the NJDOH and CDC tools and resources



Resource Links

- **State VPDP**
<http://www.nj.gov/health/cd/vpdp.shtml>
- **N.J.A.C. 8:57-4 and 8:57-6**
<http://lexisnexis.com/njoal>
- **Instructions for viewing regulations:**
http://nj.gov/health/cd/documents/instructions_viewing_regulations.pdf
- **NJ Vaccine Requirements and Guidance Materials:**
http://www.nj.gov/health/cd/imm_requirements/
- **NJIIS website**
<https://njiis.nj.gov/njiis/>
- **2019 ACIP Recommended Immunization Schedule**
<http://www.cdc.gov/vaccines/schedules/index.html>



Jeni Sudhakaran, MPH
Population Assessment Coordinator
NJDOH/VPDP
609-826-47861 (w)
Jenish.Sudhakaran@doh.nj.gov

